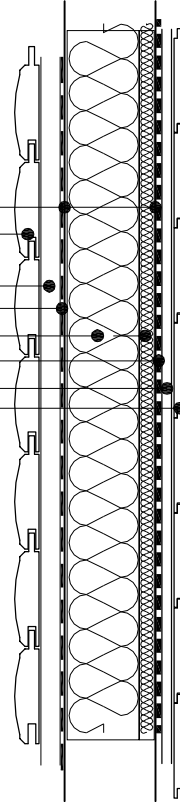


External walls and wall frame from outside to inside

- Timber frame walls: 47x120 mm C-24 timber
- External cladding: 25x150 mm Nordic timber panel (net measurement)
- External corner panels: 22x100 mm PAR timber
- Batons for airing: 25x44 mm treated timber
- Breathing membrane Tyvek type membrane
- Insulation between joist: 100 mm Rockwool slabs + 25mm Kingspan
- Cold bridge/membrane: 6mm foil and tape over joists
- Bracing 12mm Chipboard (OSB)
- Inside wall: 15mm t/g panel (white or natural)
 Alternatives with aqua board or plasterboard (12 & 15mm)
- Inside corner beading: 25x25mm PAR
- Internal architraves: 70mm chamfered (same as skirting) (corner mitre)
- External architraves: 22x100mm PAR
- Top drip edge: 22x75mm PAR
- Botom drip edge: Special storm board 50x63mm rounded with drip edge.
- Ventilation grill: One for each room
- Screws: 90mm for frame 60mm for panel and brads for internal fixings

Windows and doors: Kipa selection to client specification

External Wall



Abbey House | Wellington Way |
 Brooklands Business Park | Weybridge | Surrey | KT13 0TT

Title
 External Wall Detail - Nordic Room

Date	Scale	Drawing No.	Rev
Jan 201	1:10 @ A4		